



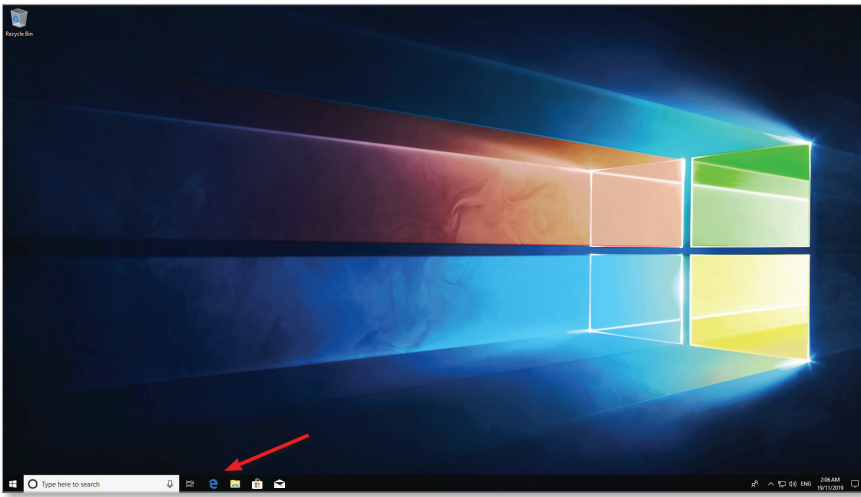
Installing the Adobe CC Desktop Application on a Personal Windows 10 Device

Staff User Guide

SWINBURNE UNIVERSITY OF TECHNOLOGY

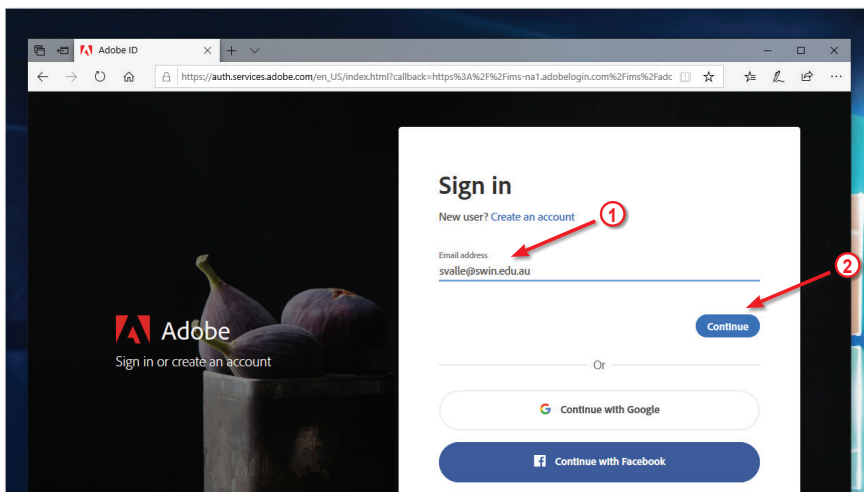
The purpose of this guide is to assist staff in installing the Adobe Creative Cloud Desktop Application on a personal Windows 10 device in order to download and use Adobe CC applications with their Swinburne provided Adobe ID

1



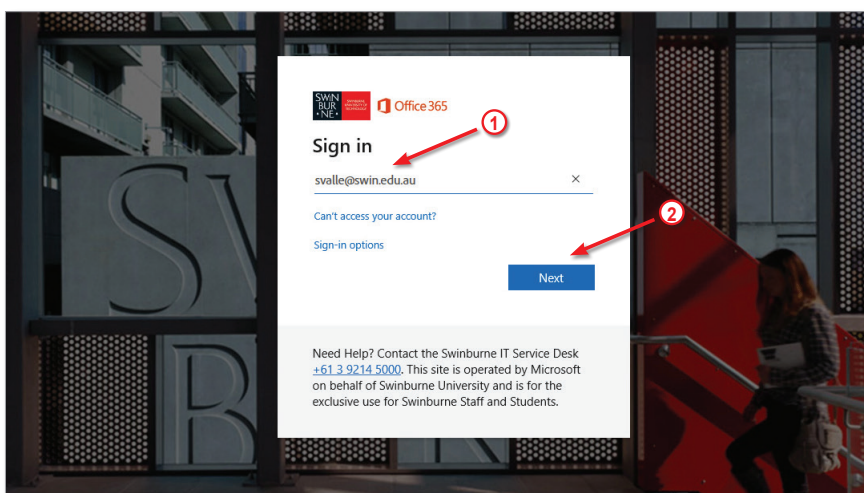
Open your preferred web browser and navigate to
<https://creativecloud.adobe.com/>

2



Enter your **Swinburne email address** in the space provided and click on the **Continue** button

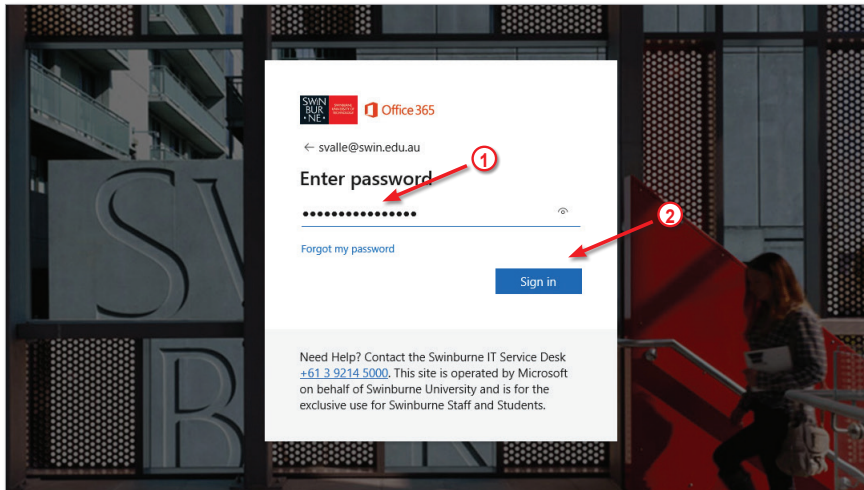
3



Adobe will recognise that your email address is associated with a Swinburne provided Adobe ID and redirect you to the Office 365 portal to sign in

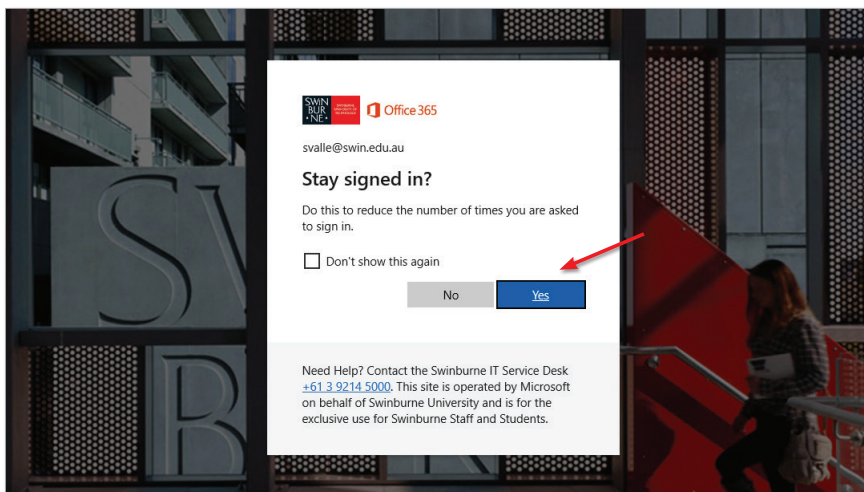
Enter your **Swinburne email address** in the space provided and click on the **Next** button

4

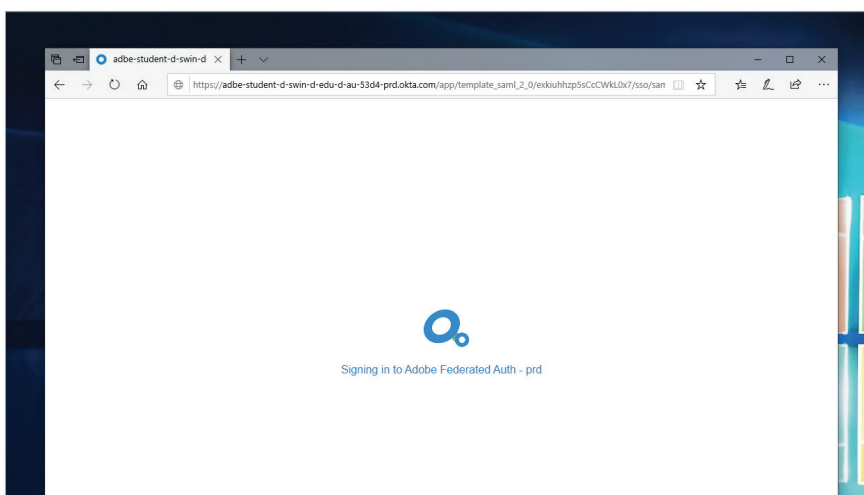


Enter your **password** in the space provided and click on the **Sign in** button

5

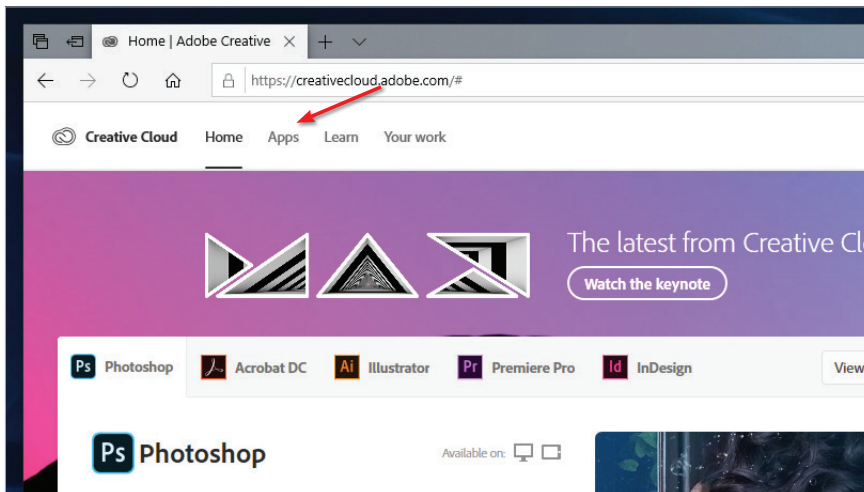


Select **Yes** to stay signed in to Office 365



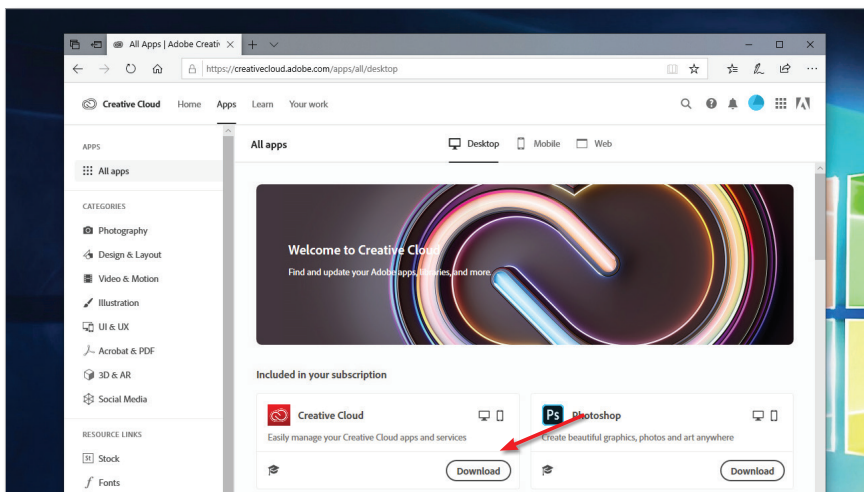
Your Swinburne Office 365 account is now logging into your Adobe account

6



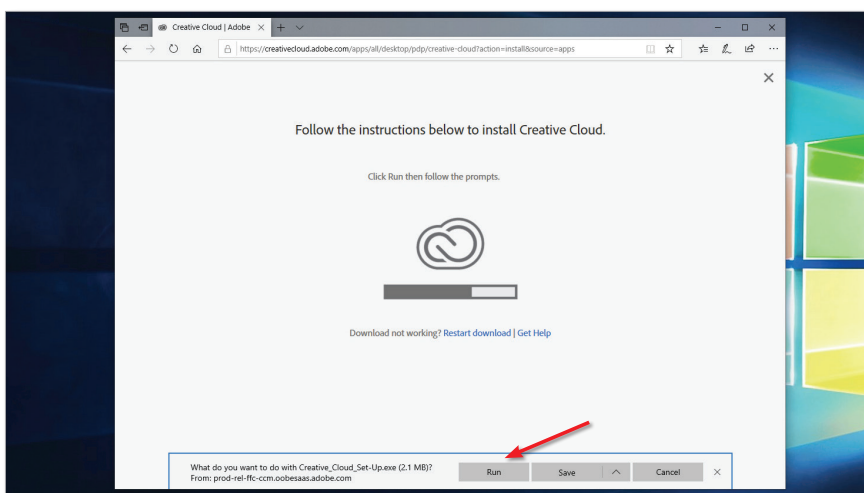
Once you have successfully signed into your Adobe account, click on the **Apps** link

7



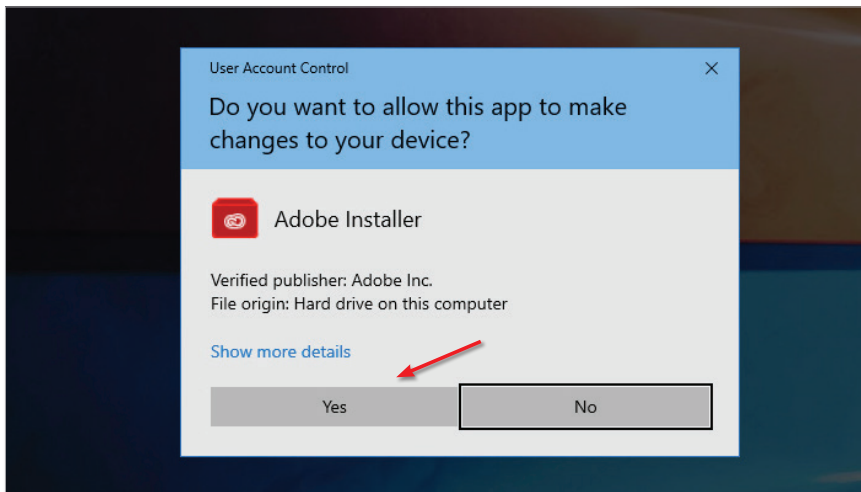
Download the **Creative Cloud** application by clicking on the **Download** button

8



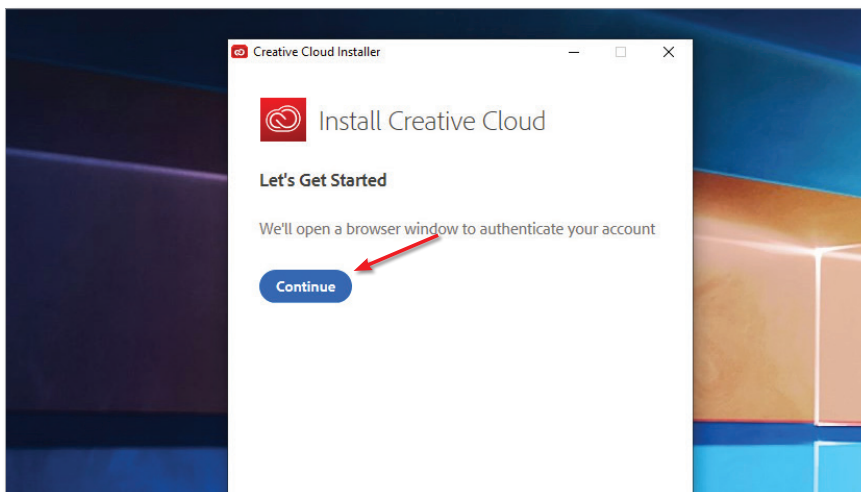
Click on the **Run** button to download and run the **Creative Cloud** installer

9

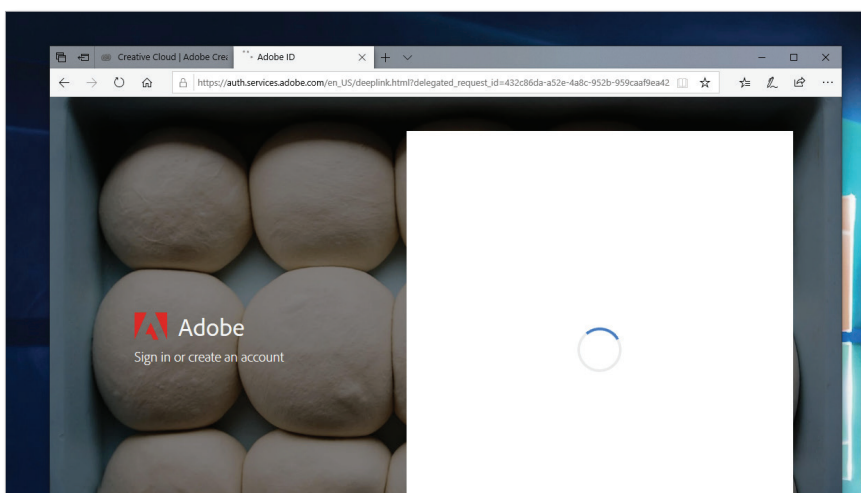


Click on the **Yes** button to allow Windows to install the **Creative Cloud** application

10

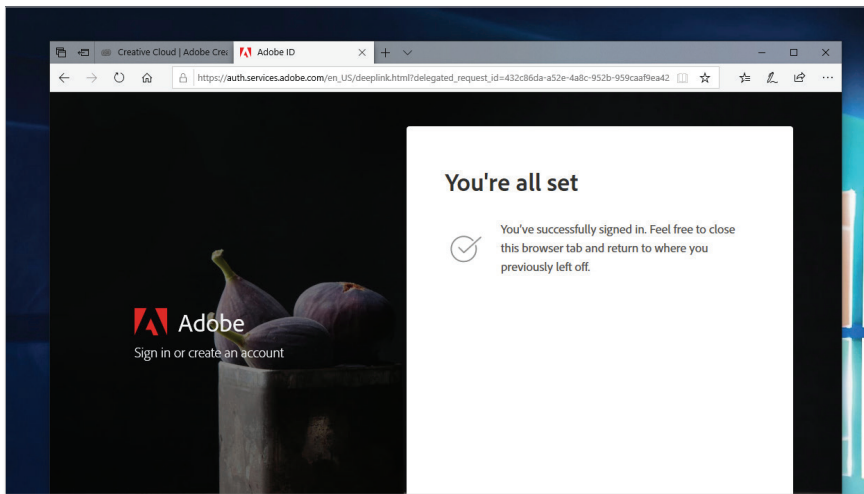


To begin the installation of the **Creative Cloud Desktop Application**, click on the **Continue** button



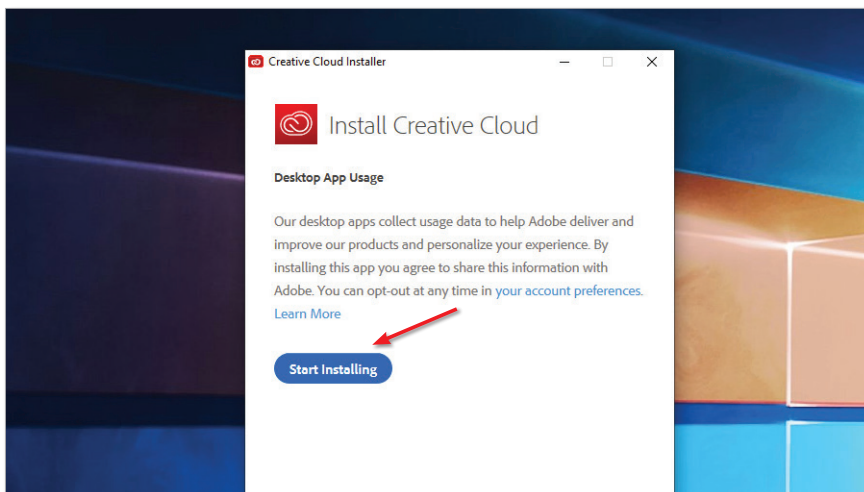
The installer will open a web browser and proceed to sign into your Swinburne provided Adobe account

If you closed the web browser from the previous steps, you may be prompted to enter your email address and password again

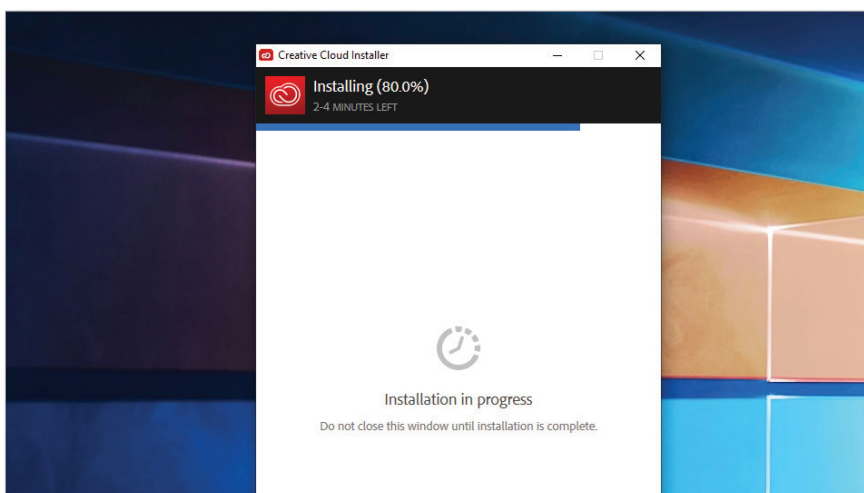


The installer has successfully signed into your adobe account. You can now close (or hide) this browser window

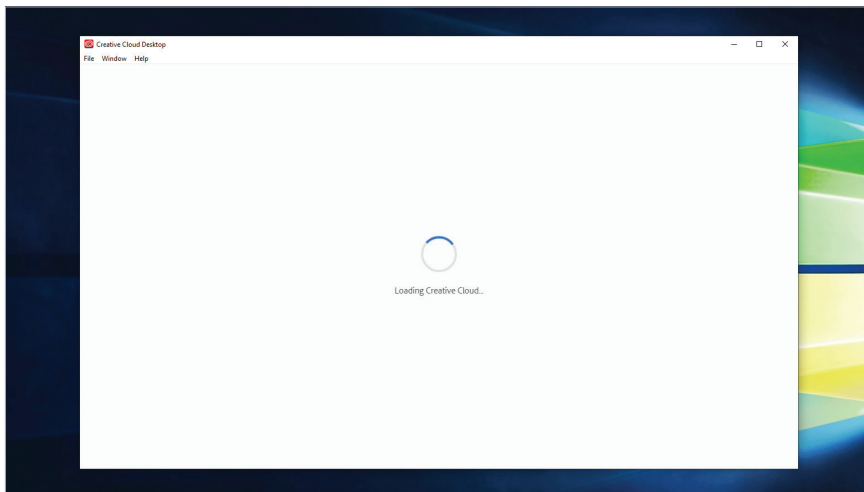
11



Click on the **Start Installing** button to begin the installation process

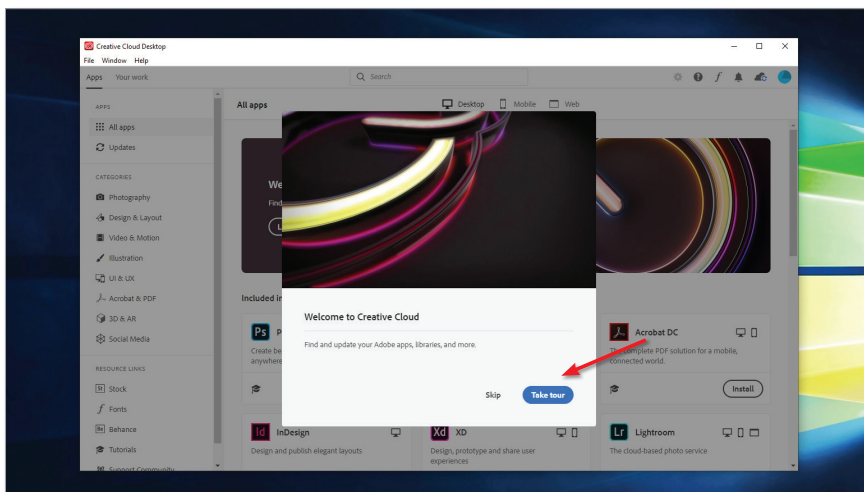


The **Adobe Creative Cloud Desktop Application** will begin installing



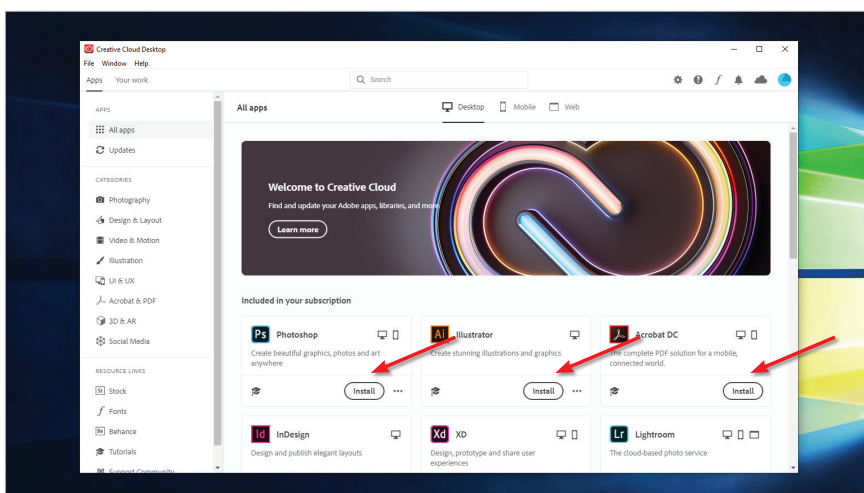
Content for the **Creative Cloud Desktop Application** is now loading

12



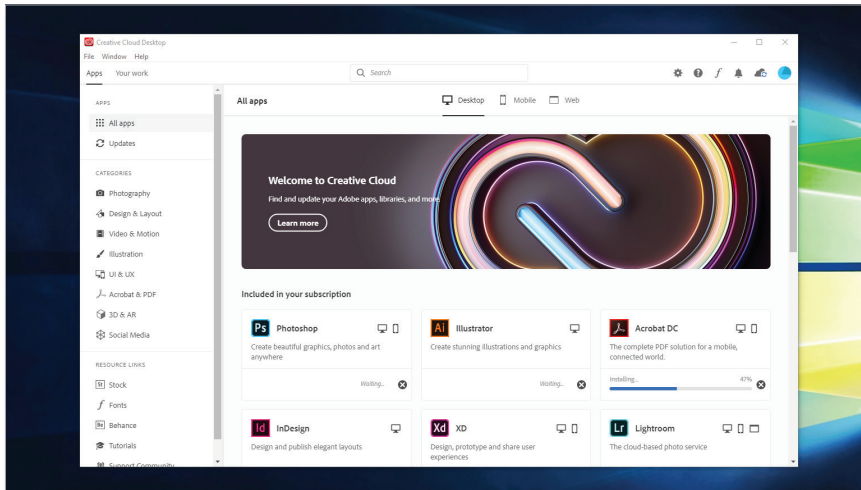
Once the **Creative Cloud Desktop Application** has completed installing, click on the **Take Tour** button for an overview of the **Creative Cloud Desktop Application**

13



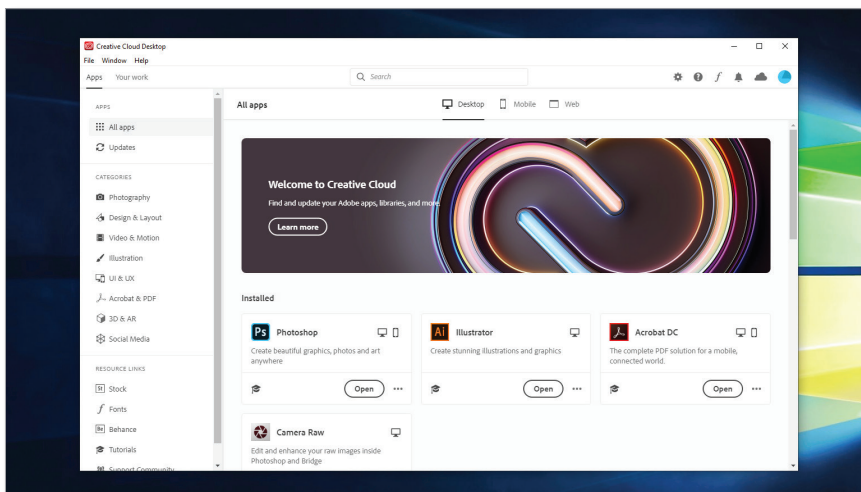
A list of applications available to install will now be displayed in the window. Select any Adobe application and click on the **Install** button

14



The application(s) you have chosen will begin to download and install

A progress bar will provide you with an estimated time to completion. Once completed, an **Open** button will appear



Installation has now completed on your chosen application(s) and can be found in your Start menu

